

We are Family

FLEXORIPP-water meter pit

FLEXORIPP, MEGARIPP 1000





Table of contents

| | |
|----------------------------------------------------|----|
| The benefits | 5 |
| Regulations and possible uses | 6 |
| Pit element | 7 |
| FLEXORIPP with DIBt approval | 8 |
| Shortening the pit | 9 |
| Lengthening the pit | 10 |
| Pit lead-throughs and installations | 11 |
| Operation of the pit system | 12 |
| Adaptable load-bearing capacity through lid choice | 13 |
| Installation examples | 14 |
| MEGARIPP 1000 | 15 |

EWE – thoroughly tried and tested. Because we're a real team.

Our products are our passion. As a team consisting of both managers and employees, we prove that this isn't just a cliché. Quality and continuity form the basis for trusting teamwork. The dedication and skills of each individual allow us to look to the future with self-assurance. Our success is grounded in reliability and the honesty with which we treat our customers. This has made us into a leading supplier of high-quality fittings for the supply of gas and water and the disposal of waste water. And we're proud of it! We're also a 3rd generation family company.

Production location: Germany

We produce our ground shut-off and garden fittings at our plant in Braunschweig. From design & development through production & quality control to sales & service, all of our processes are realised via one and the same site. This means that we can meet all requirements relating to safety, guidelines, permits, and quality checks at our site and from a single source.

Quality without compromise

DVGW certification and compliance with international guidelines are key when it comes to our fittings. All of our products are subjected to thorough checks and quality controls before being launched on the market. Our quality standards are based on a workforce trained to the highest standards, modern production facilities, and safety and environmental regulations.

We use durable, robust materials such as dezincification-resistant brass and stainless steel. This allows us to ensure the quality and sustainability of our products. To protect the environment, we use innovative environmentally-friendly materials such as lead-free silicon brass.



Blue Responsibility

Sustainable Water Technology



Reliability and innovation
from a single source

EWE FLEXORIPP water meter pits

EWE water meter pits are the result of our many years of experience in the design and production of fittings and accessories. The FLEXORIPP water meter pit is intended for installation in pipe trenches. It enables the hygienic, frost-free operation of the EWE water meter system and water meter itself.

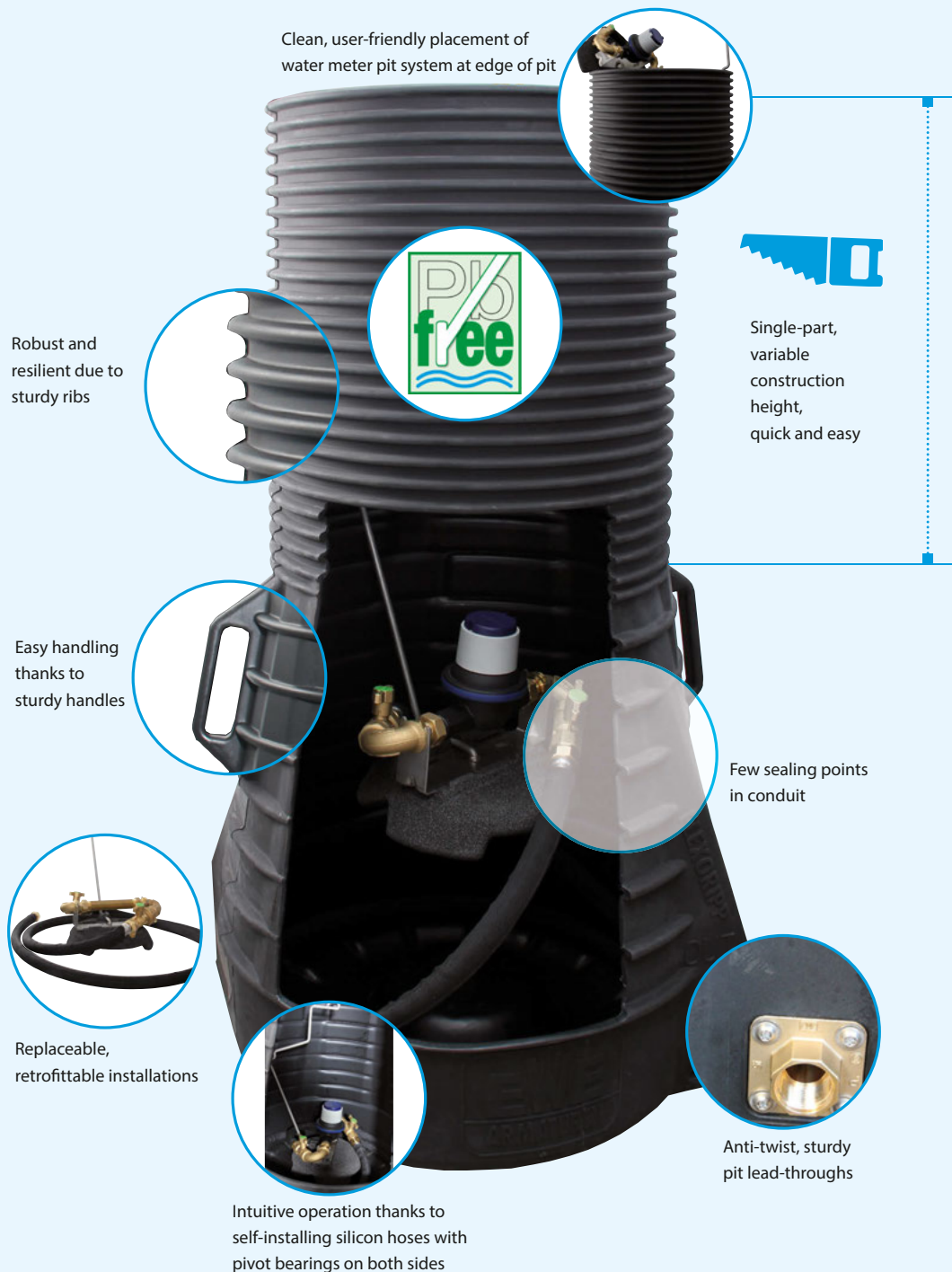
Benefits of the EWE FLEXORIPP water meter pit include the facts that it is easy for users to install and operate and that long connections to buildings are avoided by a handover point at the boundary of the property.



FLEXORIPP

The benefits

- Easy installation into pipe trenches without extensive earthwork thanks to small dimensions
- No long connections to buildings, handover at property boundary
- Easy removal of EWE water meter system, easy reading, installation, and deinstallation of meter
- Surface-waterproof, hygienic, frost-free operation of EWE water meter system and water meter itself
- FLEXORIPP water meter pit does not need to be (and cannot be) entered, so accident prevention regulations on entering shafts do not apply



In various places in the regulations, water meter pits are named as possible frost-free installation options for water meters.

- EN 806-2 states that water meter systems inside and outside buildings (in rooms and pits) must comply with EN 805 and the regulations of the water supplier.
- The relevant product regulations, including DVGW inspection principle W570 for fittings and W543 for hose lines, apply for the installations in the pits.
- In addition, water meters should be installed in a dry and clean place in accordance with W406.
- DVGW W400-1&3 and DIN 1988-200 state that pits must be easily accessible and positioned outside traffic areas if possible.
- Pit covers as per DIN EN124 provide safety relating to load-bearing capacity and child safety.

Diverse possible usages

In cemeteries and parks



On new housing estates as a building connection or construction water meter pit



At camp sites, on allotments, and at weekend cottages



At events such as the Bad Wildungen State Garden Show

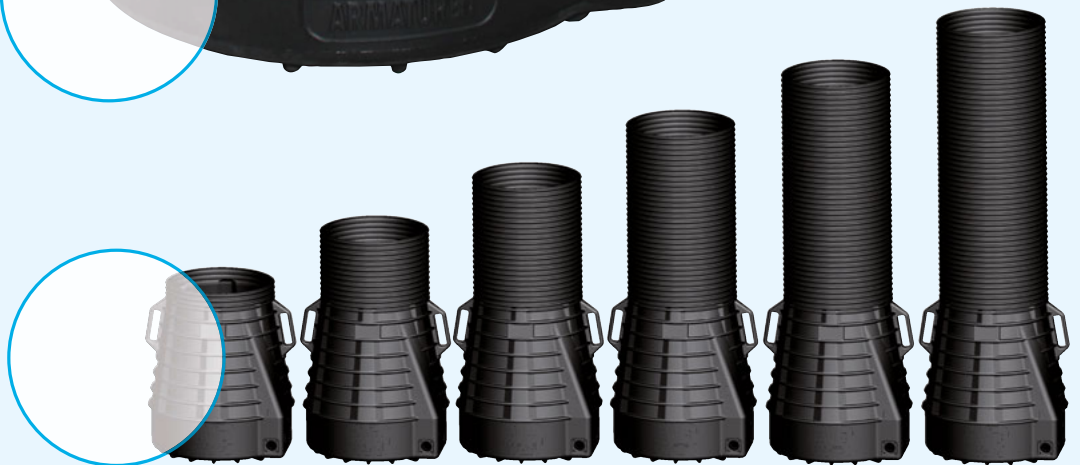


FLEXORIPP

Pit element



Available in six different sizes, can be shortened flexibly from a cover depth of 1.00 m



FLEXORIPP

with DIBt approval

The advantages of the EWE FLEXORIPP water meter pit with approval from the DIBt

- Approved by the German Institute for Structural Engineering (DIBt)
- General building approval for construction products for which there are still no generally recognised rules of technology
- Can be used for structural installations that fall under the auspices of regional building regulations (e.g. exhibition venues, sports and games areas, camp sites, holiday camps, leisure and amusement parks)
- For users who require pit approval and verification of stability
- Pit element made from DIBt-approved white PE



Deutsches
Institut
für
Bautechnik

DIBt

What is the DIBt?

- The German Institute for Structural Engineering
- A technical authority that acts on behalf of the federal government and 16 states
- A central certification body for new and unregulated construction products and methods

FLEXORIPP

Shortening the pit

Pit tube that can be shortened flexibly

Consisting of:

- Single-part with variable construction height
- Quick and easy can be shortened in multiples of 2.5 cm using a suitable tool or EWE cutter



FLEXORIPP

Lengthening the pit

TELERIPP extension

- For a subsequent sealed extension to the pit element, any desired height from 70 to 250 mm

Consisting of:

- TELERIPP attachment
- Frame seal
- TELERIPP seal
- 150 g lubricant



FIXRIPP

- For an extension of 250 mm, can be shortened to a maximum of 75 mm extension

Consisting of:

- Rigid attachment for FLEXORIPP
- With seals and assembly grease

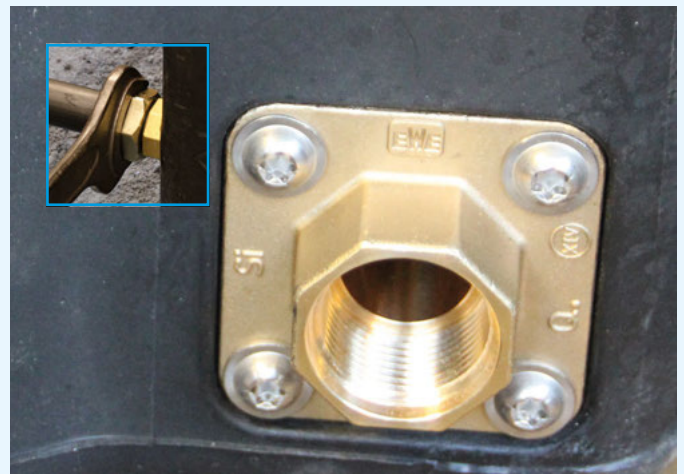


FLEXORIPP

Pit lead-throughs and installations

Pit lead-throughs

- Inner thread with O-ring contour
- Made from lead-free silicon brass
- Twist-proof and extraction-proof
- Triple O-ring seal
- Universal transition to connection fittings of all kinds



Installations

- Lead-free water meter systems
- Positioned at height of connection line
- Frost-proof thanks to choice of pipe cover
- For 1" x 190 mm or 1 1/4" x 260 mm water meter
- Dual pivot bearing stainless steel silicon hoses
- Available in various designs with ball cocks, angle seat valves, combined angle seat check valves, ball membrane non-return-flow valves, pressure regulators etc.
- All installations can be replaced and retrofitted



Certified installations:



Hose lines



Angle seat/combined angle seat check valves



Ball cocks



Ball membrane non-return-flow valves



Pit covers

FLEXORIPP

Operation of the pit system

- Pull out the water meter pit system using the lifting cable after removing the lid and insulating lid.



- Thanks to the flexible hoses, the water meter pit system can be positioned next to the pit opening and operated easily.



- Alternatively, the pit system can be affixed to the base on the edge of the pit.



- Lower the water meter pit system using the lifting cable.
- The hose lines fall into position automatically.



FLEXORIPP

Adaptable load-bearing capacity through lid choice

Insulating lid

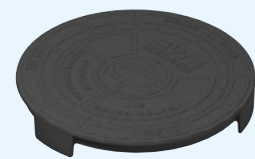
- Not accessible
- Permanently connected to the lifting cable
- Made from waterproof EPP
- Additional pit cover required



Pit cover options:

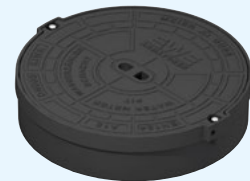
FLEXORIPP cover head, 200 kg

- Made from grey cast iron
- For load-free installation situations (flowerbed, rockery)
- Accessible up to 200 kg
- Installation above ground level



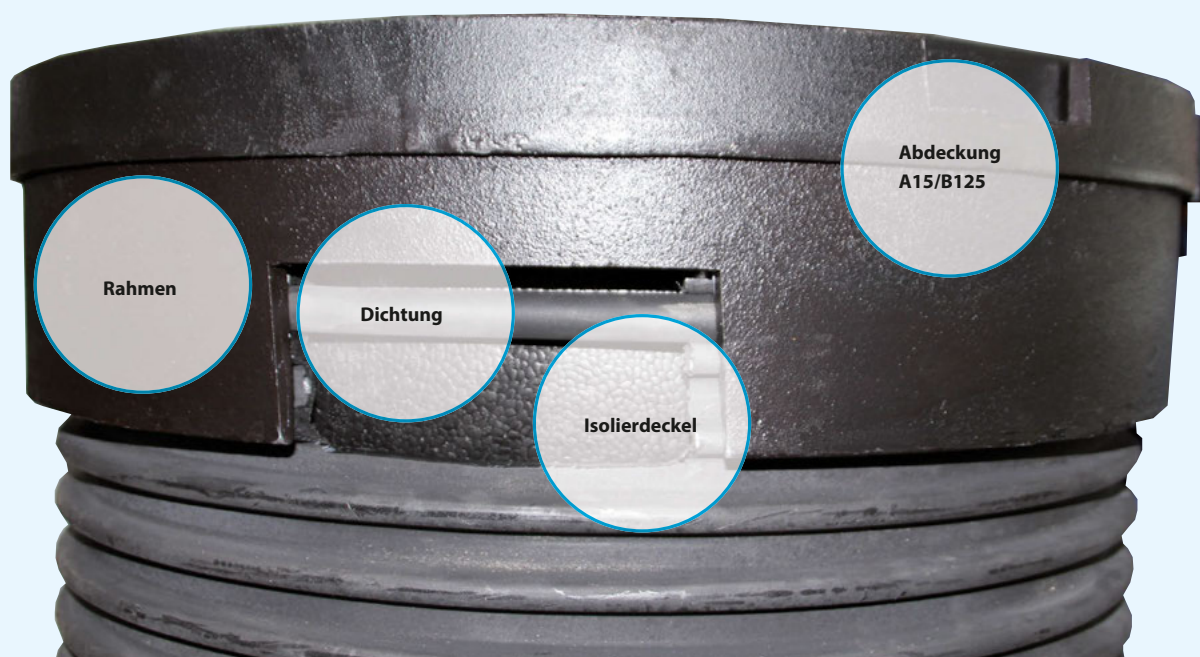
FLEXORIPP pit cover A15, EN124

- Made from grey cast iron
- Comprising frame, lid, and lid seal
- Surface-waterproof
- With position lips and lock
- For traffic areas (e.g. presence of cyclists, pedestrians), load class A15
- Certified in accordance with DIN EN 124



FLEXORIPP pit cover B125, EN124

- Made from grey cast iron
- Comprising frame, lid, and lid seal
- Surface-waterproof
- With position lips and lock
- For traffic areas (e.g. car parks), load class B125
- Certified in accordance with DIN EN 124



FLEXORIPP

Installation examples

Cover head

- Install the cover head above ground level.
- Precipitation and surface water is channelled off due to the raised installation position.
- The cover hood can only be lifted via the edge of the lid.



Pit cover A15/B125

These pit covers can be installed flush with the surface but avoid to install in depression.



- Place the sealing ring into the upper rib cavity.



- Place the lid frame onto the upper lid of the pit element.



- Close the lid.

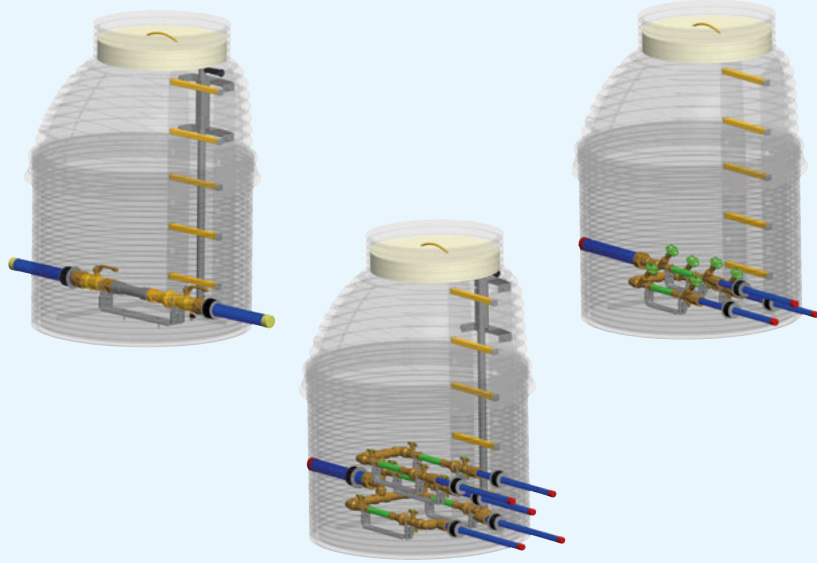


- Fit the lid frame into the cover layer.

MEGARIPP 1000

Technical features

- Walk-in shaft made of plastic (PE-HD)
- Largest inner diameter 1,000 mm
- Total construction height 1.50 m to a maximum of 6.00 m
- With integrated ladder made of PE-HD/GRP and boarding aid made of stainless steel according to accident prevention regulations
- Equipment can be designed individually, e.g. B. with water meter system Q3 16 or with up to 5 water meter systems
- Now more than 2200 variations thanks to optimized built-in components
- Lead-free fittings



Accessories

Extension for MEGARIPP 1000

- Extension modules from 125 mm to 1,000 mm



6-point key for pit cover B 125



Pit covers for MEGARIPP 1000

- Pit cover B 125



- Concrete support ring LW 600



Wilhelm Ewe GmbH & Co. KG

Volkmaroder Straße 19
38104 Braunschweig, Germany

Phone: +49 531 37005-0

Fax: +49 531 37005-55

info@ewe-armaturen.de

